



Mining & Minerals Brochure

Excellence in Project Delivery

Sacré-Davey's Mining & Minerals Department



At Sacre-Davey, our Mining and Minerals Department stands as a beacon of innovation and excellence within the resource extraction industry. With a rich legacy spanning decades, we have cultivated a reputation for delivering cutting-edge solutions that redefine the standards of efficiency and sustainability in mining.

Our team of seasoned professionals brings a wealth of expertise, with each member contributing to the collective knowledge that propels our projects to new heights. With a focus on safety, efficiency, and environmental responsibility, we consistently exceed industry expectations.

Incorporating state-of-the-art technologies, including advanced ore sorting methods, Sacre-Davey is at the forefront of modernizing mining processes. Our commitment to continuous improvement ensures that our clients benefit from the latest innovations, optimizing resource extraction while minimizing environmental impact.

As stewards of the environment, Sacre-Davey places a strong emphasis on sustainable mining practices. We actively engage in projects that prioritize responsible resource management, energy efficiency, and the reduction of environmental footprints, aligning with global sustainability goals.

Understanding the unique challenges faced by our clients, we adopt a client-centric approach in every project. From feasibility studies to project execution, we collaborate closely with our clients to tailor solutions that align with their goals, timelines, and budget constraints.

Our Mining and Minerals Department takes pride in being a catalyst for change in the industry. Whether it's optimizing processing plants, implementing advanced mineral recovery techniques, or developing innovative strategies for ore sorting, Sacre-Davey consistently pioneers solutions that set new benchmarks.

With a global footprint, Sacre-Davey's Mining and Minerals Department has been instrumental in numerous successful projects worldwide. Our contributions extend beyond traditional mining, encompassing renewable energy projects, sustainability initiatives, and community engagement programs that reflect our commitment to creating a positive impact on a global scale.

In every endeavor, Sacre-Davey's Mining and Minerals Department remains dedicated to pushing the boundaries of what's possible in resource extraction, forging a path toward a more sustainable and efficient future for the industry.



Tailored Solutions for Your Project Needs



STUDIES & TECHNICAL REPORTS

Sacré-Davey offers the expertise to advance and de-risk your project competitively. With decades of mining industry experience and a thorough grasp of regulations, we support you from scoping to technical reporting, feasibility study, and beyond.

ORE SORTING + MINING & MINERALS PROCESSING

Offering services from milling to product recovery, our collaboration with UBC resulted in a pilot ore sorting lab, enabling us to test and enhance the accuracy, speed, and effectiveness of ore sorting for improved project outcomes.

BULK MATERIALS HANDLING

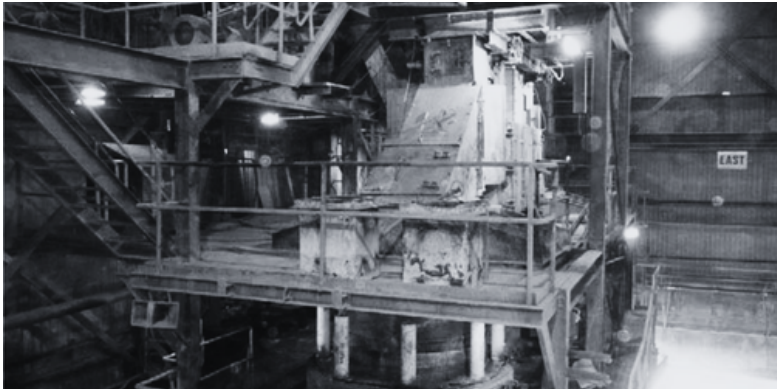
Sacré-Davey optimizes material flow from start to finish. We design safe and reliable equipment, structures, and systems to maximize throughput, minimize product degradation, and reduce environmental impact.

MAINTENANCE & ASSET MANAGEMENT

Effective asset management cuts costs, extends lifespan, and enhances safety. Our skilled engineers conduct audits and assist clients in balancing asset opportunities, costs, and risks for improved performance and safety.



Mining & Minerals Sample Projects



Highland Valley Copper

Pebble Crusher Area Improvement

Sacré-Davey performed a study to remove the existing 350 HP pebble crushing units and replace with larger 900 HP units

Kutcho Creek Mine

Scoping Study

SD worked to produce a comprehensive scoping study for the optimization and development of a new mine.



Confidential

Pilot Plant Technology Scale-Up

SD provided the FEED and is currently completing detailed engineering for a commercial plant.



Connect with Us Today



Our website

www.sacre-davey.com



Our e-mail

admin@sacre-davey.com



Telephone

[+1\(604\)986-0663](tel:+1(604)986-0663)



HQ address

315 Mountain Hwy North Vancouver, BC V7J 2K7



LinkedIn

[@Sacre-Davey](https://www.linkedin.com/company/sacre-davey)